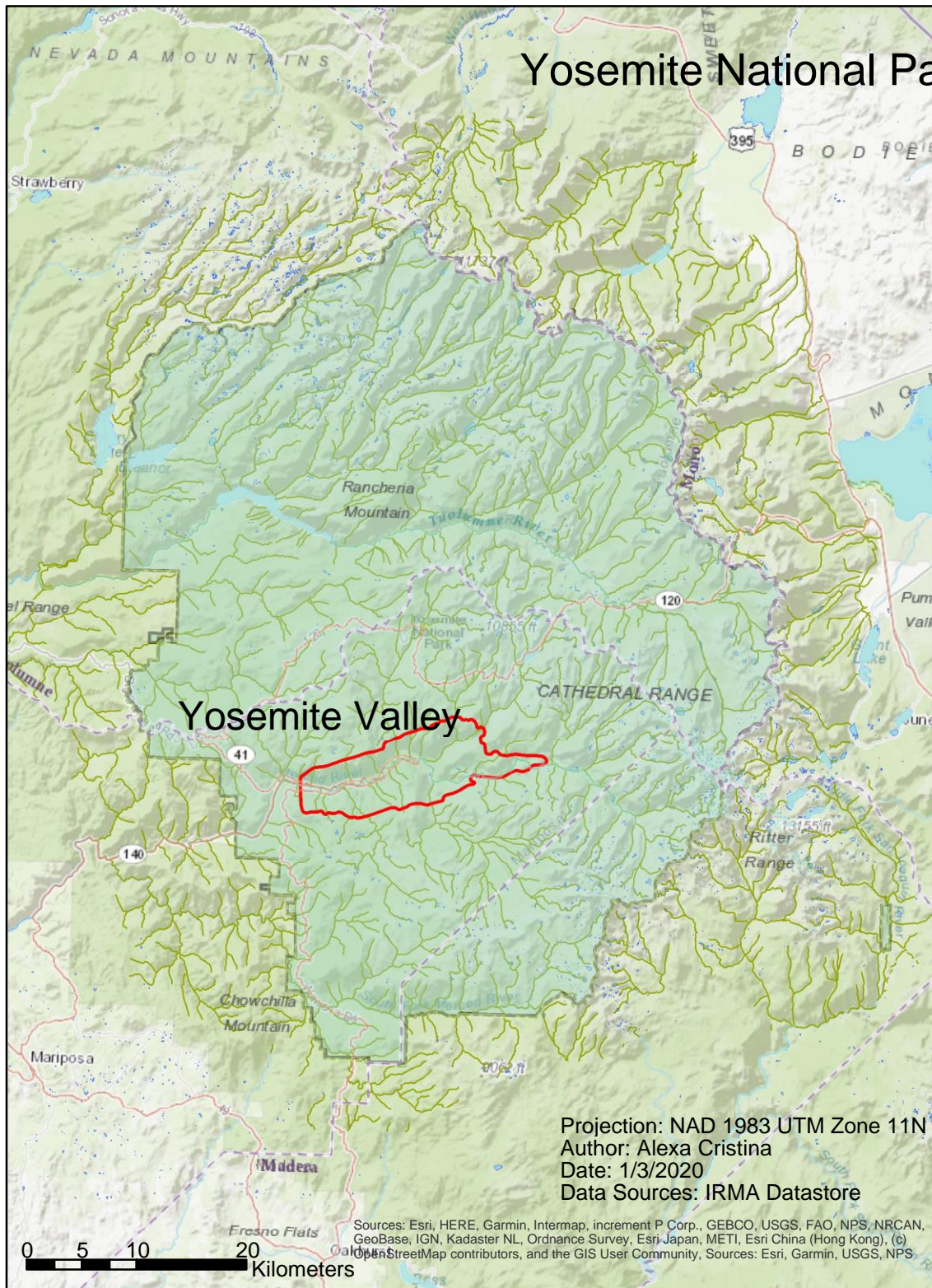


# Yosemite National Park



Yosemite Valley

Projection: NAD 1983 UTM Zone 11N  
Author: Alexa Cristina  
Date: 1/3/2020  
Data Sources: IRMA Datastore

0 5 10 20  
Kilometers

Sources: Esri, HERE, Garmin, Intermap, increment P Corp., GEBCO, USGS, FAO, NPS, NRCAN, GeoBase, IGN, Kadaster NL, Ordnance Survey, Esri Japan, METI, Esri China (Hong Kong), (c) OpenStreetMap contributors, and the GIS User Community, Sources: Esri, Garmin, USGS, NPS



# Possible Climbing Places in the Yosemite Valley, highlighted using LIDAR

Projection: NAD 1983 UTM Zone 11N

Author: Alexa Cristina

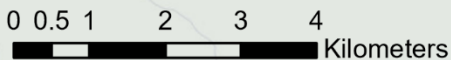
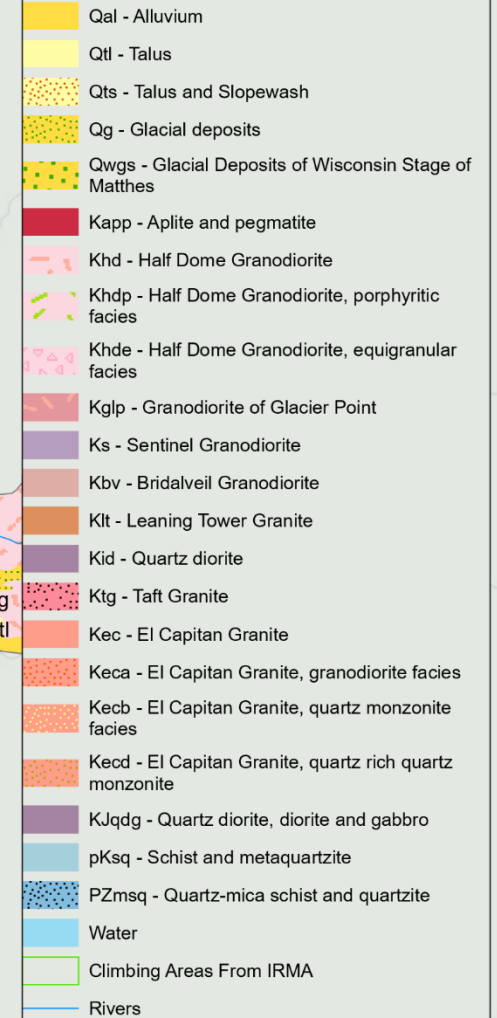
Date: 12/30/2019

Data Sources: OpenTopography, IRMA Datastore



Sources: Esri, HERE, Garmin, Intermap, increment P Corp., GEBCO, USGS, FAO, NPS,

## Yosemite Valley Geology



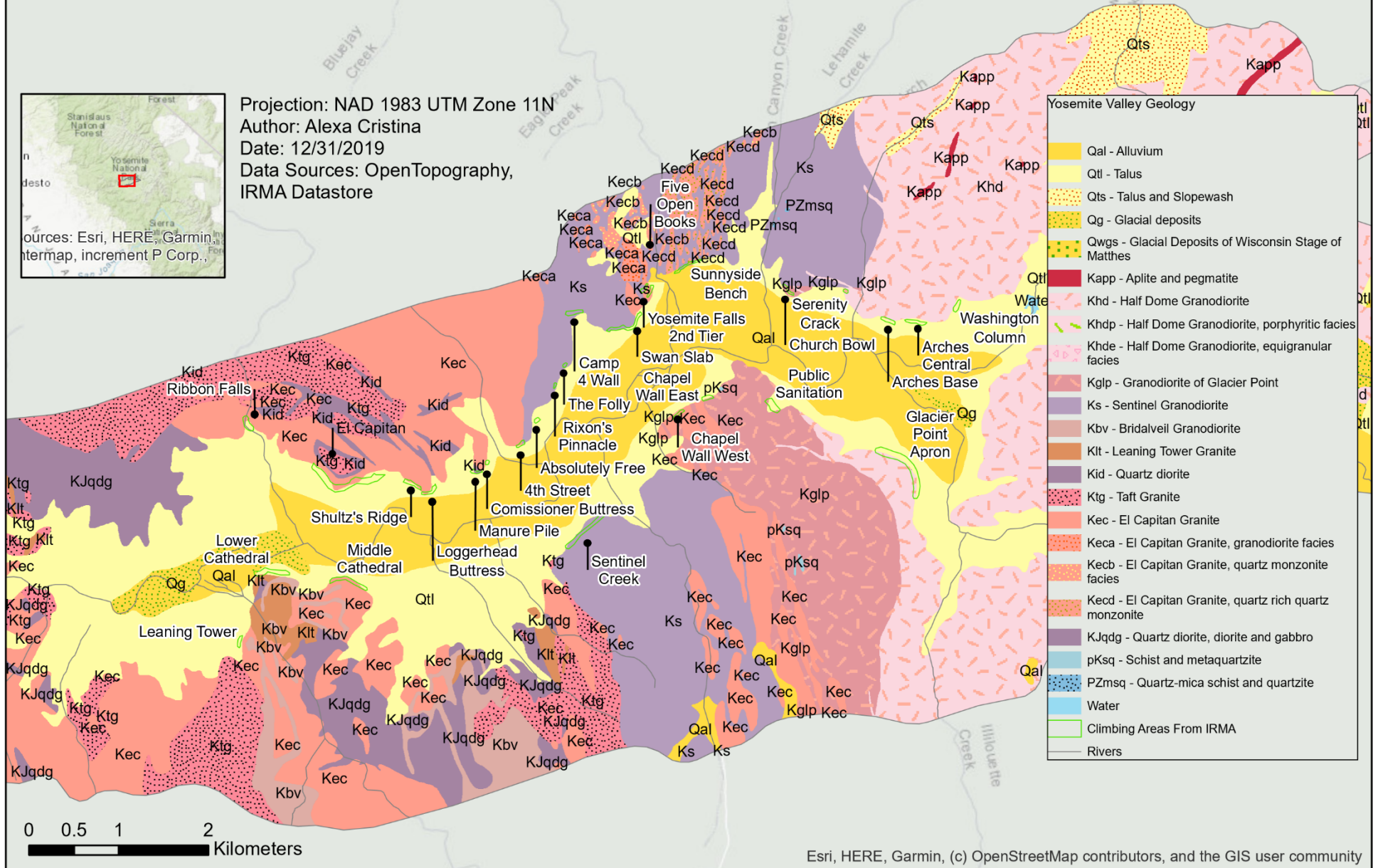


# Possible Climbing Places in the Yosemite Valley, highlighted using LIDAR



Projection: NAD 1983 UTM Zone 11N  
 Author: Alexa Cristina  
 Date: 12/31/2019  
 Data Sources: OpenTopography,  
 IRMA Datastore

Sources: Esri, HERE, Garmin,  
 Intermap, increment P Corp.,



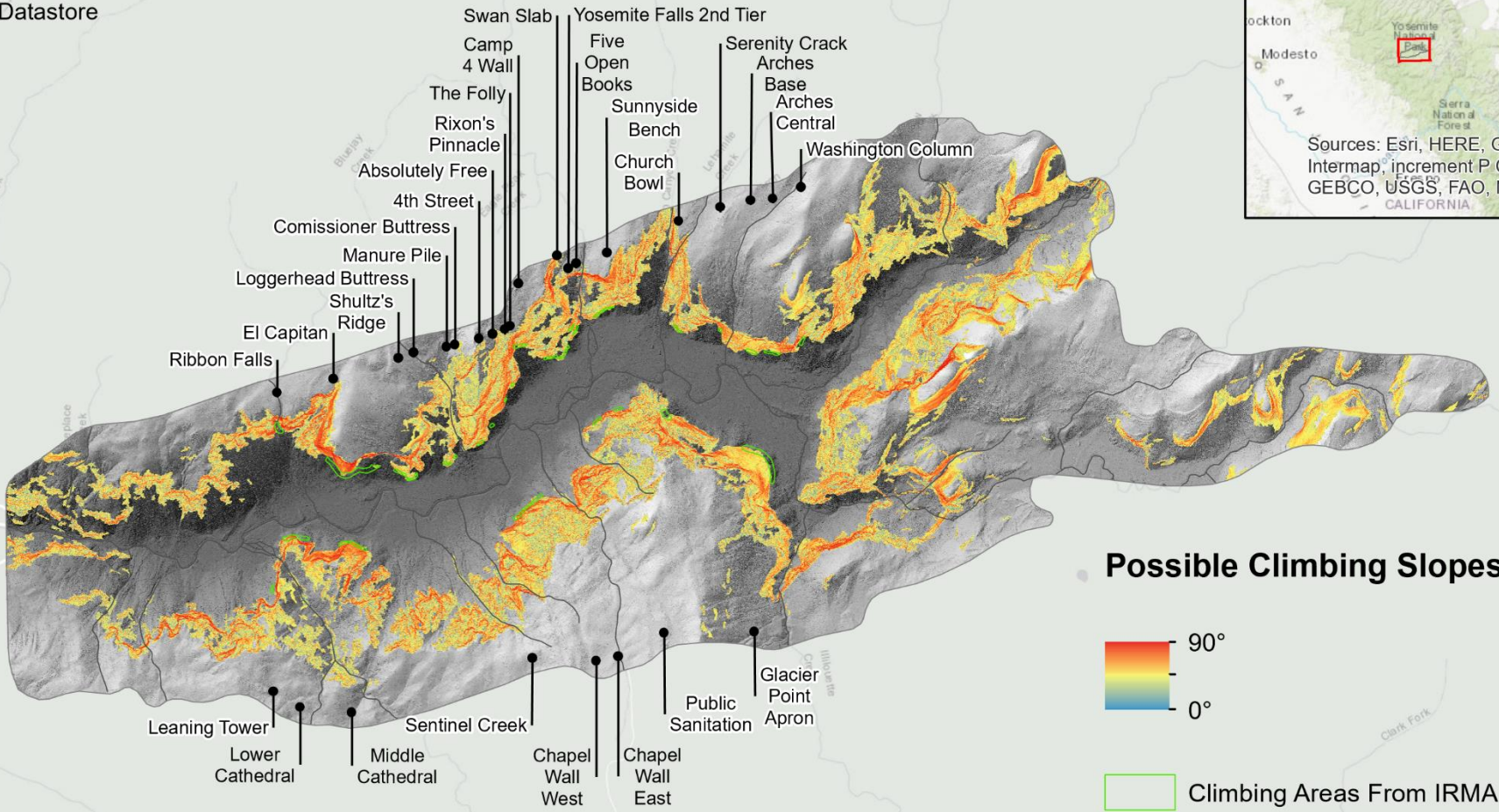
**Yosemite Valley Geology**

Qal - Alluvium
Qtl - Talus
Qts - Talus and Slopewash
Qg - Glacial deposits
Qwgs - Glacial Deposits of Wisconsin Stage of Matthes
Kapp - Aplite and pegmatite
Khd - Half Dome Granodiorite
Khdp - Half Dome Granodiorite, porphyritic facies
Khde - Half Dome Granodiorite, equigranular facies
Kglp - Granodiorite of Glacier Point
Ks - Sentinel Granodiorite
Kbv - Bridalveil Granodiorite
Klt - Leaning Tower Granite
Kid - Quartz diorite
Ktg - Taft Granite
Kec - El Capitan Granite
Keca - El Capitan Granite, granodiorite facies
Kecb - El Capitan Granite, quartz monzonite facies
Kecd - El Capitan Granite, quartz rich quartz monzonite
KJqdg - Quartz diorite, diorite and gabbro
pKsq - Schist and metaquartzite
PZmsq - Quartz-mica schist and quartzite
Water
Climbing Areas From IRMA
Rivers

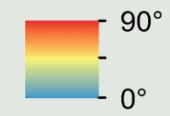


# Possible Climbing Places in the Yosemite Valley, highlighted using LIDAR

Projection: NAD 1983 UTM Zone 11N  
Author: Alexa Cristina  
Date: 12/30/2019  
Data Sources: OpenTopography,  
IRMA Datastore



## Possible Climbing Slopes



- Climbing Areas From IRMA
- Rivers



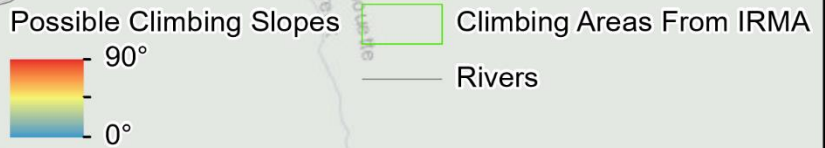
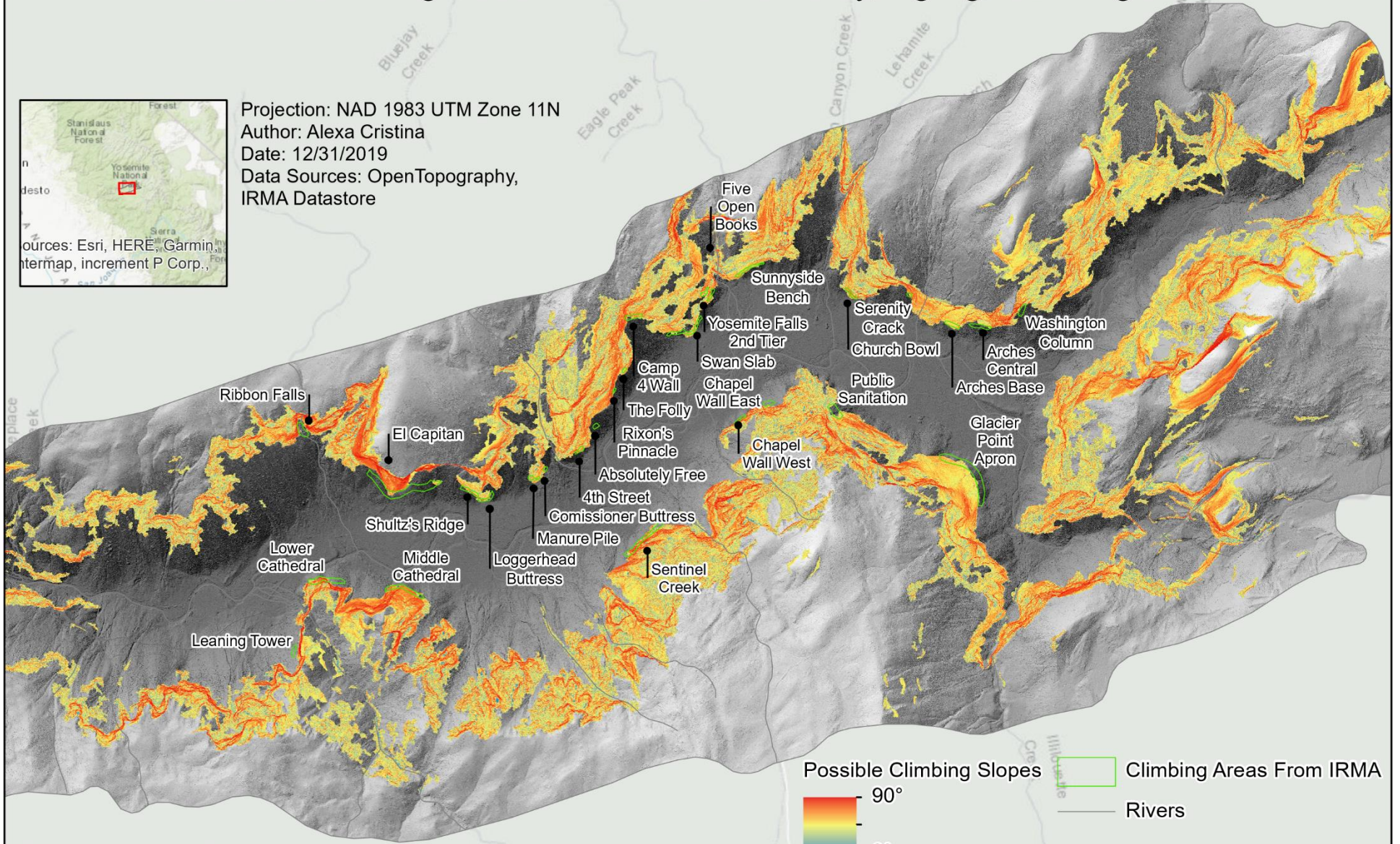


# Possible Climbing Places in the Yosemite Valley, highlighted using LIDAR



Projection: NAD 1983 UTM Zone 11N  
 Author: Alexa Cristina  
 Date: 12/31/2019  
 Data Sources: OpenTopography,  
 IRMA Dastore

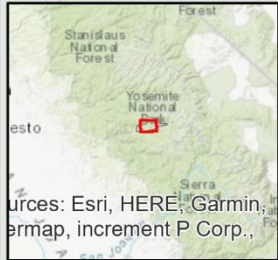
ources: Esri, HERE, Garmin  
 ntermap, increment P Corp.,



Esri, HERE, Garmin, (c) OpenStreetMap contributors, and the GIS user community

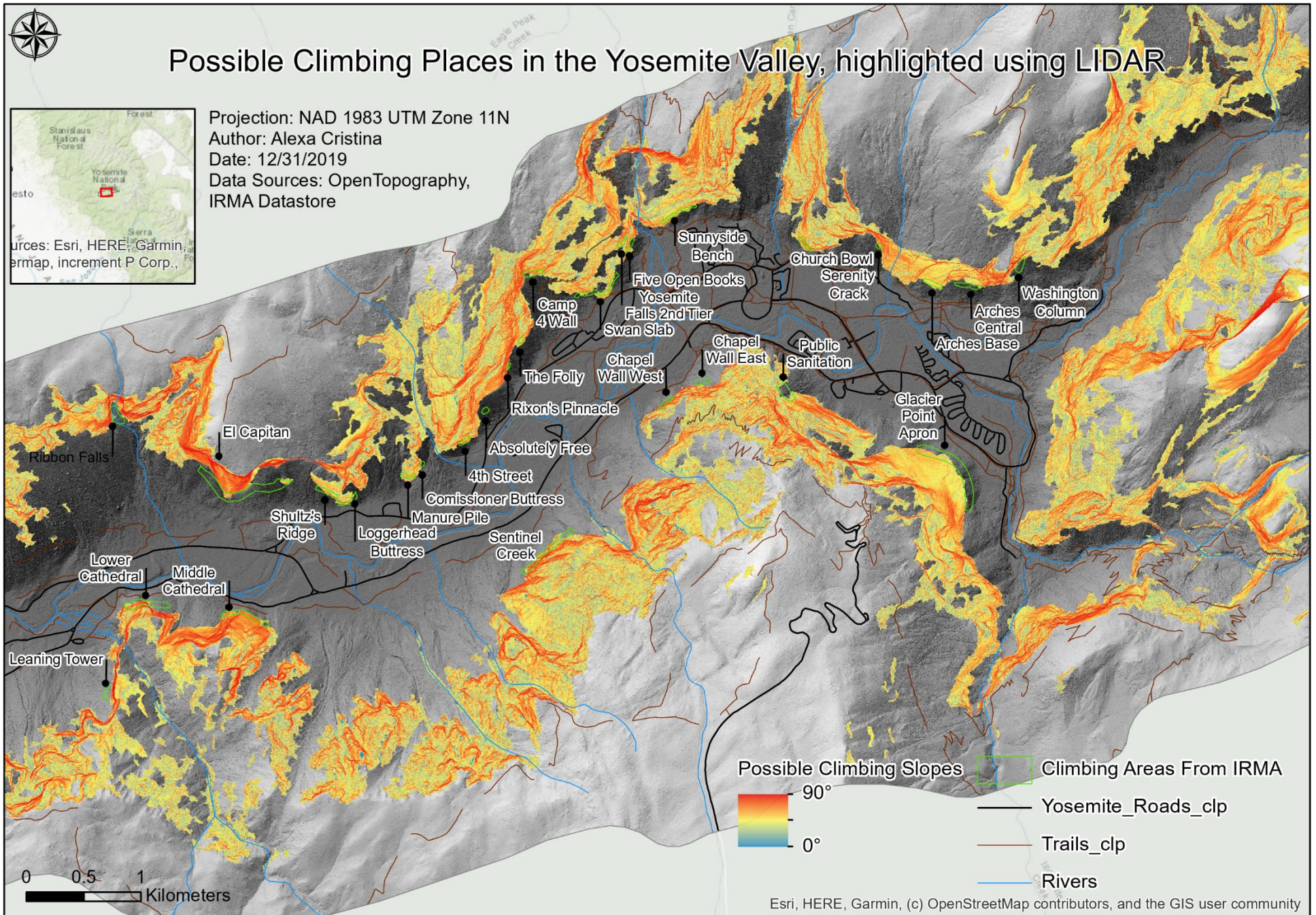


# Possible Climbing Places in the Yosemite Valley, highlighted using LIDAR



Projection: NAD 1983 UTM Zone 11N  
Author: Alexa Cristina  
Date: 12/31/2019  
Data Sources: OpenTopography,  
IRMA Datastore

Sources: Esri, HERE, Garmin,  
Bing, Mapbox, OpenStreetMap, Mapbox, increment P Corp.,



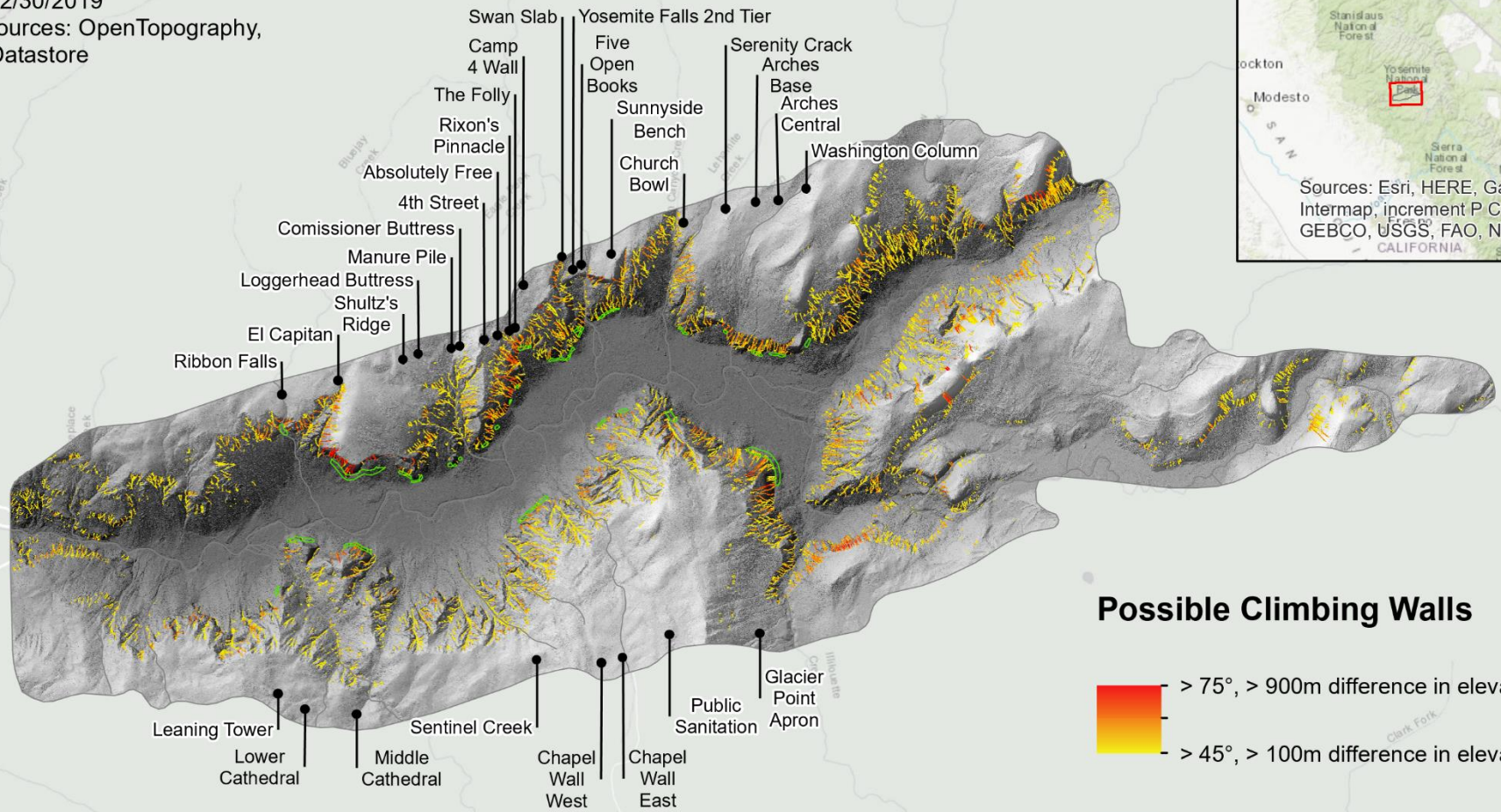


# Possible Climbing Places in the Yosemite Valley, highlighted using LIDAR

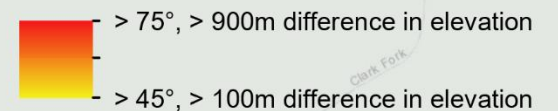
Projection: NAD 1983 UTM Zone 11N  
Author: Alexa Cristina  
Date: 12/30/2019  
Data Sources: OpenTopography,  
IRMA Datastore



Sources: Esri, HERE, Garmin,  
Intermap, increment P Corp.,  
GEBCO, USGS, FAO, NPS,  
CALIFORNIA



## Possible Climbing Walls



Climbing Areas From IRMA

Rivers







# Possible Climbing Places in the Yosemite Valley, highlighted using LIDAR

Projection: NAD 1983 UTM Zone 11N  
Author: Alexa Cristina  
Date: 12/30/2019  
Data Sources: OpenTopography,  
IRMA Datastore



- Swan Slab
- Yosemite Falls 2nd Tier
- Camp 4 Wall
- Five Open Books
- Serenity Crack
- The Folly
- Rixon's Pinnacle
- Sunnyside Bench
- Arches Base
- Absolutely Free
- Church Bowl
- Arches Central
- 4th Street
- Comissioner Buttress
- Manure Pile
- Loggerhead Buttress
- Shultz's Ridge
- El Capitan
- Ribbon Falls
- Washington Column
- Leaning Tower
- Lower Cathedral
- Middle Cathedral
- Sentinel Creek
- Chapel Wall West
- Chapel Wall East
- Public Sanitation
- Glacier Point Apron

## Possible Climbing Walls

-  > 75°, > 900m difference in elevation
-  > 45°, > 100m difference in elevation

 Climbing Areas From IRMA

 Rivers

0 0.5 1 2 3 4  
Kilometers



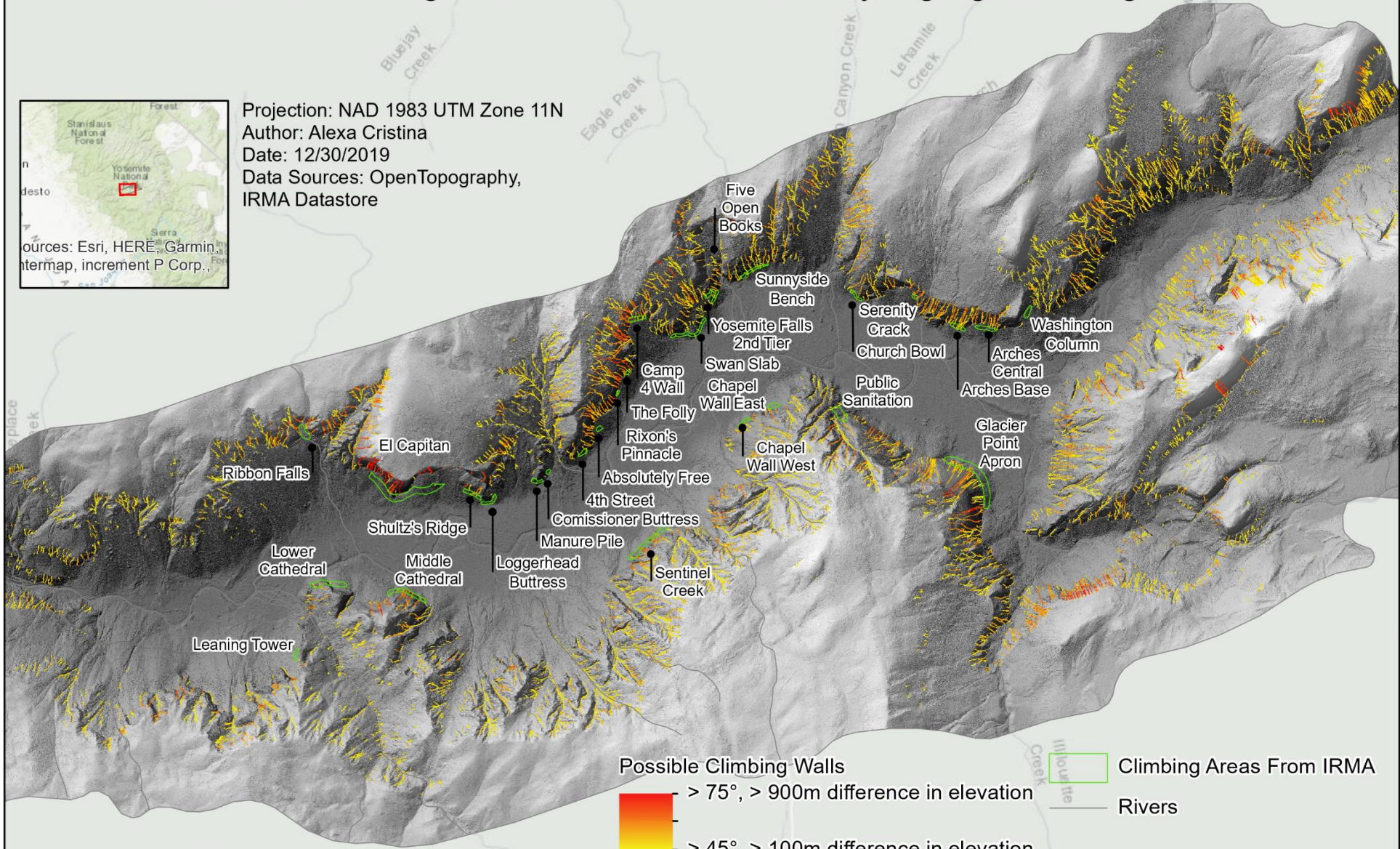


# Possible Climbing Places in the Yosemite Valley, highlighted using LIDAR



Projection: NAD 1983 UTM Zone 11N  
Author: Alexa Cristina  
Date: 12/30/2019  
Data Sources: OpenTopography,  
IRMA Dastore

ources: Esri, HERE, Garmin  
ntermap, increment P Corp.,



Possible Climbing Walls  
 > 75°, > 900m difference in elevation  
 > 45°, > 100m difference in elevation  
 Climbing Areas From IRMA  
 Rivers

0 0.5 1 2  
Kilometers



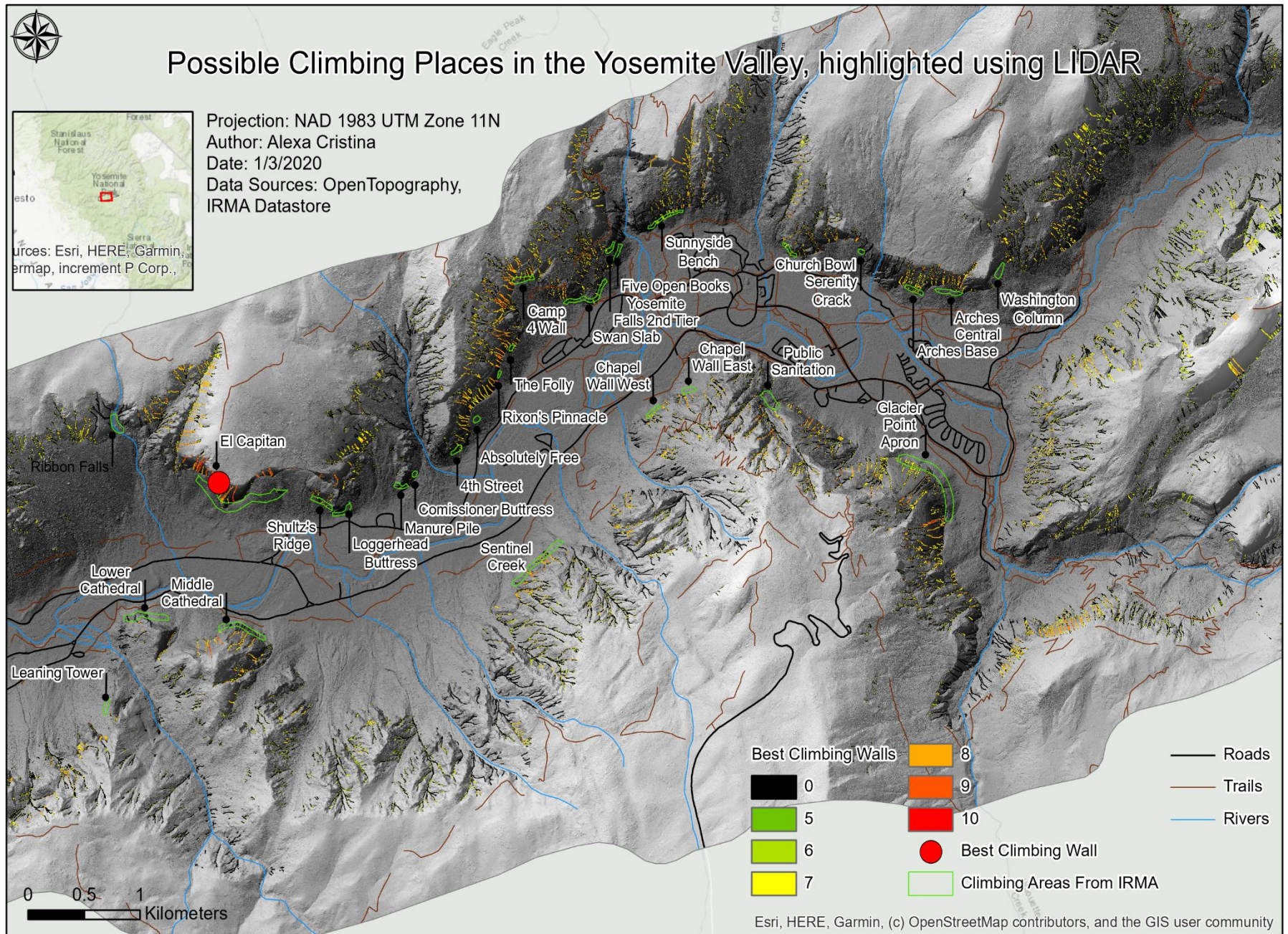


# Possible Climbing Places in the Yosemite Valley, highlighted using LIDAR

Projection: NAD 1983 UTM Zone 11N  
Author: Alexa Cristina  
Date: 1/3/2020  
Data Sources: OpenTopography,  
IRMA Datastore



Sources: Esri, HERE, Garmin,  
OpenMap, increment P Corp.,



0 0.5 1 Kilometers